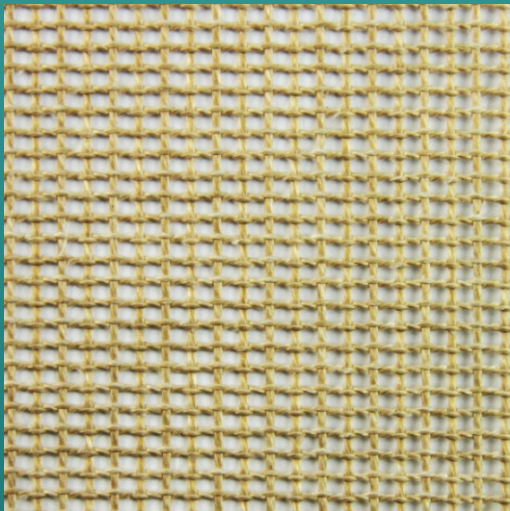


PTFE Coated Open Mesh 2mm x 2mm

Thickness:	0.82mm	Weave:	Plain
Coated Weight:	455 g/m ²	Surface Texture:	Smooth/Mesh
PTFE Coating:	25%	Temperature Resistance:	-73 - 260°C
Tensile Warp:	480	Tensile Weft	630

Material Properties

- Extremes of heat and cold resistance: Minus -73°C to + 260°C
- Chemical inertness: Affected only by a few rare substances at very high temperatures
- High Release from sticky materials 'Non-Stick'
- Easy cleaning (Nothing bonds permanently)
- Low friction co-efficient: 0.04 – 0.10; depending on load and surface speed
- Chemical corrosion and moisture resistance
- Mildew and fungus resistance
- Ultra-Violet, Infra-Red, Micro-Wave, Radio Frequency resistance
- Non Combustible – Self Extinguishing
- Low Thermal Expansion: <5%
- Food Approval (USFDA)
- Lightweight and energy efficient for economical operation



Additional Information

PTFE mesh belts are used in applications such as the drying of printed products for example; point of display stands, T-shirts, glass and mass produced paper prints. Print dryers usually opt for Ultra violet, Infra red or hot air as the heat source to dry.

Other applications range from the drying of cereals, non wovens, charcoal interlinings, carpet & carpet tiles, printed circuit boards and shrink-wrap tunnels but to name a few.

PTFE open mesh conveyor belting is light weight and cost effective therefore is easy to handle and less expensive than wire alternatives that can be difficult to replace.

Often supplied with a metallic clipper type fastener these style of belts can easily be removed and replaced therefore minimising downtime and saving money.

This material can be offered in carbon loaded black therefore providing antistatic properties.